



Powering Innovation



PROTECTION + AUTOMATION + CONTROL

LED SEMAPHORE INDICATOR FOR BREAKER JAV 043

JVS ELECTRONICS PVT. LTD.

#121, Manchanayakanahalli,
Bangalore Mysore Highway, Bidadi,
Ramanagara District - 562 109, Karnataka, India
+91 94808 26272, +91 94808 26260
bangalore@jvselectronics.in, www.jvselectronics.in

FEATURES

- ◆ LED based design
- ◆ Clear and High Visibility
- ◆ Two different LED indications for Breaker/Isolator Open/Closed Status
- ◆ Compact, dust proof case
- ◆ Easy to mount
- ◆ Low power consumption



APPLICATION

Automatic bright LED visual status indication of circuit breakers, isolators and earth switches on mimic diagram of control panels.

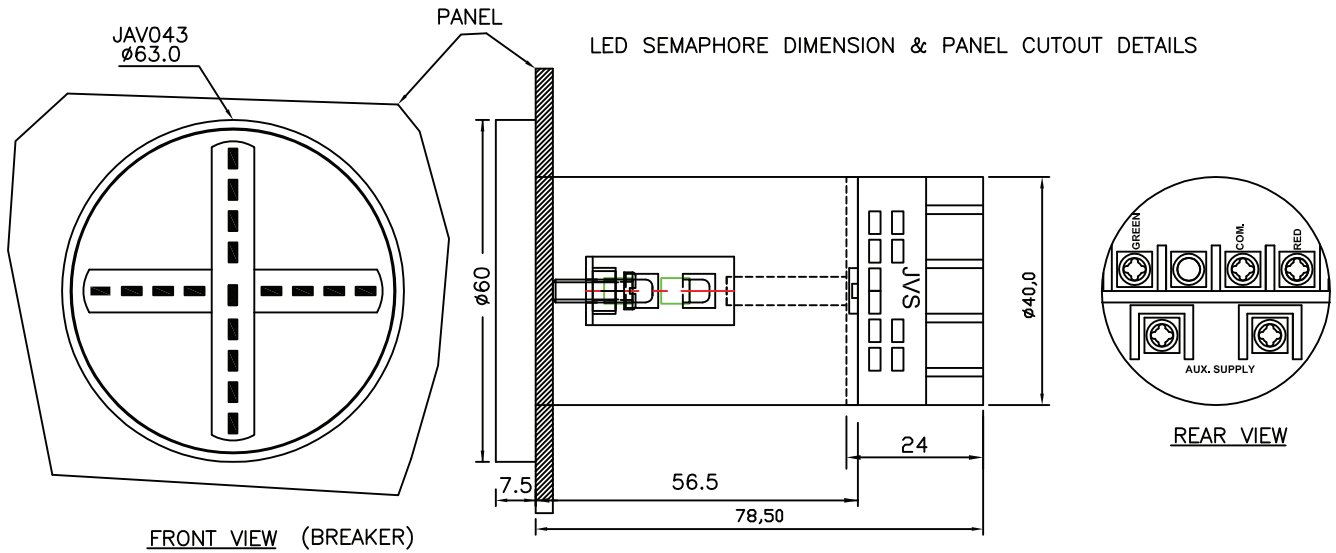
DESCRIPTION

Semaphore indicator consists of an electronic circuit which indicates RED line and GREEN line indication. When the circuit breaker or isolator is in closed position RED line will glow and provide continuity in the mimic diagram. When the circuit breaker or isolator is in opened position GREEN line will glow, this position is at right angle to the mimic. The indicator is housed in a cylindrical molded case and is designed for Flush mounting on control panels. A mounting clamp is provided on the case for fixing on the panel.

TECHNICAL DATA

Universal Voltage	: 24V-250V
Insulation	: 2kV RMS, 50 Hz for 1 minute or 2.5kV RMS, 50Hz for 1 second between all terminals case
Working Temperature	: -20 to + 60°C
Body Material	: Polycarbonate
Protection degree	: IP54
Operating life at ambient temperature	: > 1 lakh hours

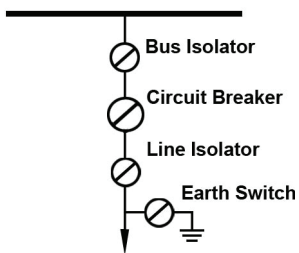
TERMINAL DIAGRAM:



PANEL CUTOUT DIMENSIONS

Panel Cutout Dimension : 42 dia.

TYPICAL MIMIC DIAGRAM



ORDERING INFORMATION

Type No. : JAV 043
Voltage Rating : 24V-250V (Universal Voltage)